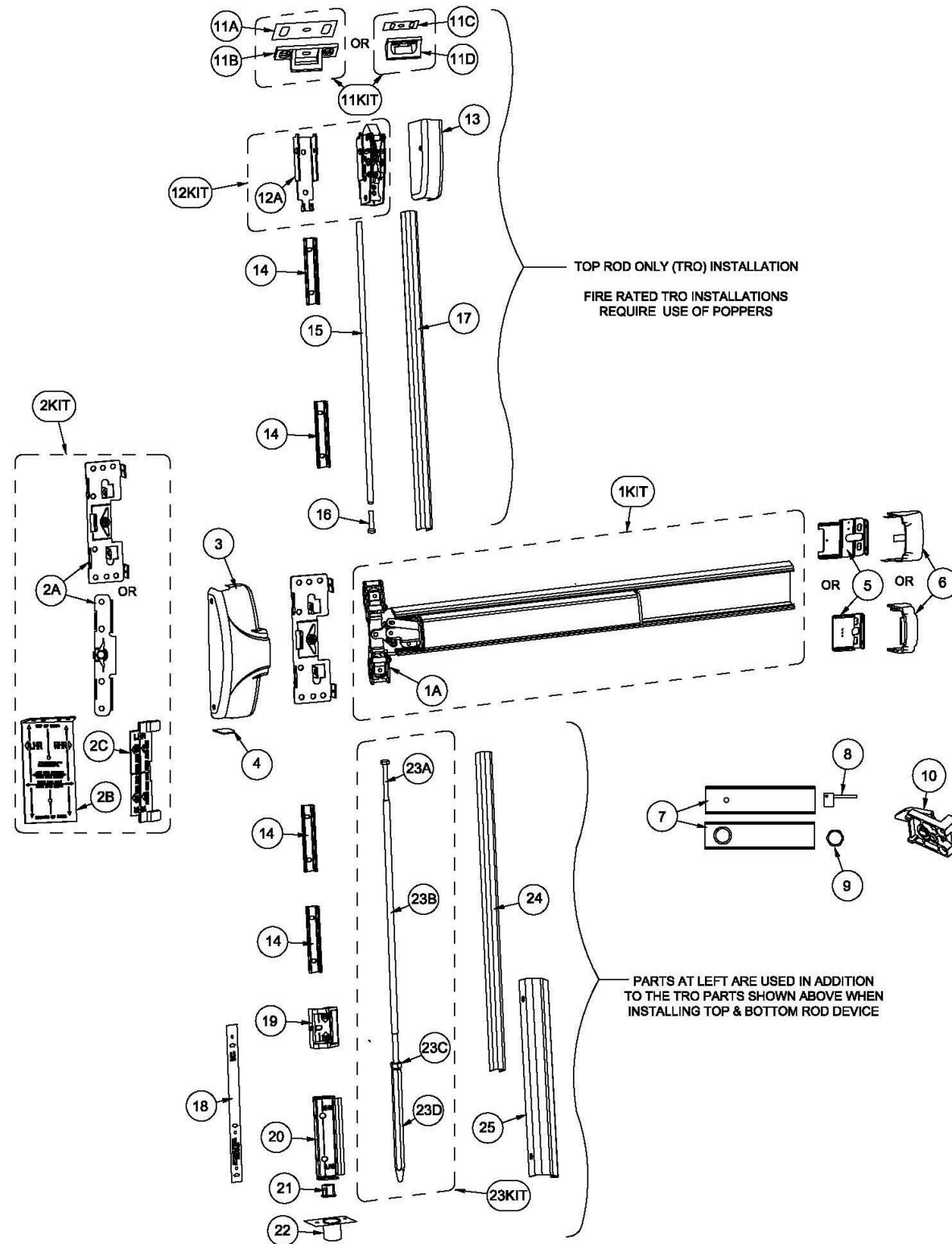




20 / 50 Series Parts List

For Mechanical Devices Only



Item	Order Part#	Description	Price
1A	101463-2	Centercase Assembly, RHR, Wide Stile, 20 Series	\$341.00
	101463-3	Centercase Assembly, LHR, Narrow Stile, 50 Series	\$341.00
	101463-4	Centercase Assembly, LHR, Wide Stile, 20 Series	\$341.00
2KIT	103806-13	Mounting Plate/Strike Locator Kit, Narrow Stile (includes 2A, 2B, 2C)	\$62.00
	103806-10	Mounting Plate/Strike Locator Kit, Wide Stile (includes 2A, 2B, 2C)	\$90.00
2A	100696-1	Mounting Plate, BP2, Narrow Stile	\$26.00
	100697-1	Mounting Plate, BP1, Wide Stile	\$49.00
2B	101511-1	Strike Locator	\$27.00
2C	100720	Centercase Locator	\$16.80
3	101506-9	Centercase Cover, Stainless Steel, Wide, 20 series, 630	\$164.00
	101505-9	Centercase Cover, Stainless Steel, Narrow, 50 series, 630	\$183.00
	104640-5	Centercase Cover, Aluminum, Wide, 20 series, 628	\$136.00
	104602-5	Centercase Cover, Aluminum, Wide, 20 series, 628	\$210.00
4	101709	Centercase Cover Cap (for TRO device only)	\$12.60
5	100147	Endcap bracket for EC1 (ramped) endcap w/o battery holder	\$15.75
	101093	Endcap bracket for EC1 (ramped) endcap w/ battery holder	\$21.00
	104303	Endcap bracket for EC2 (flush) endcap w/o battery holder	\$41.00
	104636	Endcap bracket for EC2 (flush) endcap w/ battery holder	\$41.00
6	101642-9	Endcap, EC1 (ramped) Stainless Steel, 630	\$101.00
	104304-9	Endcap, EC2 (ramped) Stainless Steel, 630	\$94.00
	104612-1	Endcap, EC2 (flush) Aluminum, 628	\$149.00
7	100860-136	Fillerplate, Subassembly, S&R, Hex Dogging, HD, 20 series, 36", 630	\$781.68
	100860-118	Fillerplate, Subassembly, S&R, Cylinder Dogging, CD, 20 series, 36", 630	\$781.68
	100860-100	Fillerplate, Subassembly, S&R, Hex Dogging, HD, 20 series, 36", 628	\$734.21
	100860-137	Fillerplate, Subassembly, S&R, Hex Dogging, HD, 50 series, 36", 628	\$781.68
8	100450	Hex Key (for Hex Dogging)	\$9.00
9	100783	Cylinder Nut (for Cylinder Dogging)	\$8.00
10	102216-2	Hex Dogging Assembly	\$26.00
	102216	Cylinder Dogging Assembly	\$19.95
11KIT	100855-3	97 Strike Kit (includes 11A & 11B)	\$41.00
	100855-4	96 Strike Kit (includes 11C & 11D)	\$41.00
11A	100088	Strike Shim	\$1.36
11B	100234-1	Strike, Non-roller	\$23.00
11C	101067	Strike Shim, Narrow	\$7.35
11D	100330	Strike, Non-roller, Narrow	\$31.00
12KIT	101464	Top Latch Assembly (includes 12A)	\$271.00
12A	101393	Mounting Bracket, Top Latch Assembly	\$27.00
13	101400-9	Top Latch Cover 630	\$124.00
14	101425	Rod Cover Bracket	\$23.00
15	104051-1	Top Rod, 7' Door, Steel (36.375" long)	\$45.00
	104051-2	Top Rod, 8' Door, Steel (36.375" long)	\$92.00
16	101574-2	1/4-20 Hex Bolt, 2" long	\$0.62
17	101487-9	Top Rod Cover, 7' & 10' applications 630 (x2 FOR 10')	\$109.00
	101461-9	Top Rod Cover, 8' applications, 630	\$109.00
18	101716	Mylar Bottom Latch Bracket Locator	\$8.40
19	101428	Bracket, Top (for bottom rod bolt)	\$11.55
20	101427	Bolt Retaining Bracket	\$28.00
21	101429	Hex Bushing	\$7.35
22	101562-9	Dust Strike	\$60.00
23KIT	101567	Bottom Rod Assembly (includes 23A-23D)	\$113.00
23A	101574-3	1/4-20 Hex Bolt, 3" long	\$0.69
23B	101477	Bottom Rod	\$45.00
24	101486-9	Bottom Rod Cover, 630	\$49.00
25	101426-9	Bottom Cover, 630	\$70.00

NOTE: Your particular part or configuration may not be shown: Contact Detex technical support at 800-729-3839 (option 2)

